

projects

Palma Criolla City Center

Mexico City, Mexico

Conceptual Design

Uses:

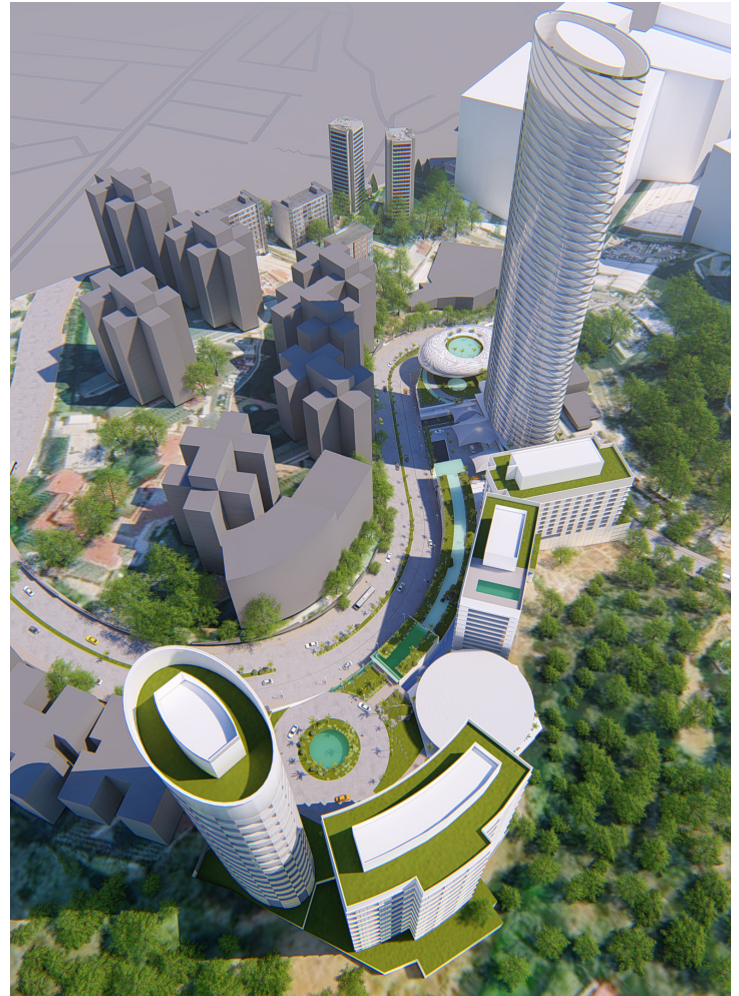
Museum
Cinema
Banquet Hall
Hospital
Condominiums
Office
Hotel
Retail

Services:

Master Planning
Architecture

Description:

Situated on a small sloping site with a drop-in elevation of 100 feet, the Palma Criolla City Center transforms the challenge topography into an amenity rich mixed-use development in a rapidly transforming area of Mexico City. DCS Design is using high-density planning to deliver the high-quality uses greatly in-demand in the growing Palma Criolla neighborhood. A terraced 3,000 car parking garage provides the foundation for the modern architecture rising from the hill side. A landscaped open plaza provides connectivity between the buildings, housing both public and private uses. Ground floor retail and civic functions including a hospital, museum, banquet hall, education and cinema activate the site. The hotel, residential and office spaces all enjoy unobscured view thanks to the elevation of the site.



dc
DESIGN

